

## Bow Shackle Powertex PBSP

### Product information



### POWERTEX

The POWERTEX Bow Shackle PBSP is a Grade 6 lifting shackle designed for demanding industrial environments where flexibility and efficiency are important. It is supplied with an alloy steel screw pin, allowing quick and easy assembly and disassembly.

The bow shape supports multi-directional loading, making it suitable for use with lifting slings, chains, and wire rope assemblies. Manufactured from quenched and tempered alloy steel and hot dip galvanized, it delivers reliable performance in daily lifting operations.

The PBSP complies with EN 13889, AS 2741(generally), ASME B30.26 and meets the performance requirements of US Fed. Spec. RR-C-271 Type IVA Class 2 Grade A, supporting safe and compliant lifting across international projects.

#### When to choose this product:

Choose the PBSP screw pin version when:

- Speed and ease of handling are important
- The shackle is part of temporary or frequently changed lifting setups
- You need clear marking and traceability for inspection routines

#### Product benefits:

- **Screw pin for quick and easy opening**  
Allows fast installation and removal, helping reduce downtime in lifting setups that change frequently.
- **Forged alloy steel, quenched and tempered, Grade 6**  
Provides consistent strength and predictable performance in demanding lifting operations.
- **Safety factor 6:1**  
Designed with a clear safety margin for overhead lifting applications. ... [Read more](#)

**Material:** Forged alloy steel, supplied with alloy screw pin.

**Marking:** According to standard, CE-marked, Powertex (PT or PTEX) , WLL, size, grade and batch number.

**Temperature range:** -40°C up to +200°C

**Finish:** All parts hot dip galvanized. Bolt additional powder painted.

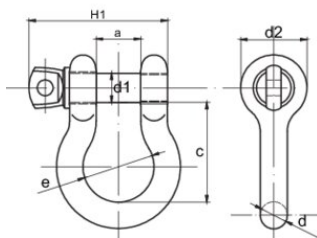
**Standard:** EN 13889, AS 2741, ASME B30.26

**Safety factor:** 6:1

**Grade:** 6

## Bow Shackle Powertex PBSP

### Blueprint



### Technical data

Part code	WLL ton	Size inch	a* mm	c* mm	d mm	d1 mm	d2 mm	e mm	H1 mm	Weight kg
420100030880	0.33	3/16	10	22.6	5	6.3	14.5	15.5	29	0.026
420100050880	0.5	1/4	13	29	6.5	8	17.5	20	38	0.048
420100080880	0.75	5/16	13.5	31	8	9.5	21	21.5	42.5	0.082
420100100880	1	3/8	17	36.5	10	11.2	25	26.2	51.5	0.15
420100150880	1.5	7/16	18.5	42.9	11.3	12.7	27	29.5	58	0.2
420100200880	2	1/2	20.6	47.75	12.7	15.8	30.5	33.3	67	0.3
420100330880	3.25	5/8	27	60	16	18.6	40	43	85	0.65
420100480880	4.75	3/4	32	71.5	19	22	48	51	98.5	1.01
420100650880	6.5	7/8	37	84.5	22	25	54	58	114	1.5
420100850880	8.5	1	43.5	96.25	26.5	28	60	68.5	129.5	2.25
420100950880	9.5	1-1/8	48	109	29	32	68	75	144	3.25
420101200880	12	1-1/4	53	120.5	32	35	76	84	157	4.45
420101350880	13.5	1-3/8	59	134	35	38	84	94	171	5.95
420101700880	17	1-1/2	62	148.5	38	42	92	99	186	7.72
420102500880	25	1-3/4	75	178	45	50	106	128	227	12.64
420103500880	35	2	84	197.5	52	55	122	148	253	18.72
420105500880	55	2-1/2	107	269.5	66	70	145	186	318	37
420108500880	85	3	130	325	76	80	165	205	382	58