

Swivel Eye Bolt Codipro SEB UP

Product information



The SEB lifting ring is a single swivel ring. Equipped with 2 pins that always guide it perfectly in the direction of the sling. It is specially designed for lifting, including rotating loads.

Features:

- Gradup steel ring that has a rotating range of 360°.
- Swivelling under load
- Safe alternative to C15 DIN 580 eye bolts.
- Torque key adaptor available on request.

... [Read more](#)

Material: High tensile steel

Marking: According to standard, CE-marked

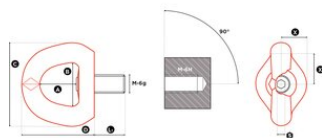
Temperature range: -20°C up to +200°C

Standard: EN 1677-1
except grade/WLL

Safety factor: 5:1

Swivel Eye Bolt Codipro SEB UP

Blueprint



Technical data

Part code	WLL ton	Thread	Torque Nm	A mm	B mm	C mm	D mm	L1mm mm	S mm	X mm mm	Weight kg
4215SEBM8UP	0.4	M 8 (x1.25)	6	30	34	60	57	14	6	20	0.24
4215SEBM10UP	0.5	M 10 (x1.50)	10	30	34	60	57	17	6	20	0.24
4215SEBM12UP	0.8	M 12 (x1.75)	15	30	34	60	57	21	6	20	0.24
4215SEBM16UP	1.4	M 16 (x2)	50	38	45	88	80	27	8	35	0.8
4215SEBM20UP	2	M 20 (x2.5)	100	38	45	88	80	30	8	35	0.8
4215SEBM243T8UP	3.2	M 24 (x3)	160	38	45	88	80	36	14	35	0.8
4215SEBM244T2UP	3.4	M 24 (x3)	160	58	70	115	106	36	14	50	2.6
4215SEBM30UP	5.5	M 30 (x3.5)	250	58	70	115	106	45	14	50	2.7
4215SEBM36UP	9	M 36 (x4)	320	83	94	168	155	54	14	70	7
4215SEBM42UP	12	M 42 (x4,5)	400	83	94	168	155	63	14	70	7
4215SEBM48UP	15	M 48 (x5)	600	80	94	168	155	68	19	70	7