

Lifting Grab BSV

Product information

For concrete pipes. Standard grabs to suit pipes from 15 to 60 cm. Special grabs for pipes from 80 to 160 cm.

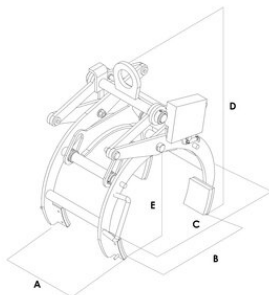
... [Read more](#)



Finish: Yellow painted.

Lifting Grab BSV

Blueprint



Technical data

Part code	WLL ton	Jaw width mm	Type	Rubber pad	A mm	C mm	D mm	E mm	Weight kg
502100033250090	0.25	208-325	RB 15/25	Steel	100	510	530	210	21
502100054000090	0.5	250-400	RB 20/30	Steel/RB	410	625	650	310	50
502100065500090	0.6	390-550	RB 30/40	Steel/RB	410	740	720	360	65
502100106550090	1	515-655	RB 40/50	Steel/RB	410	900	840	435	85
502100167800090	1.6	630-780	RB 50/60	Steel/RB	410	1,040	970	580	120
502100168400090	1.6	630-840	RB 50/60 S	Steel/RB	410	1,040	970	580	120