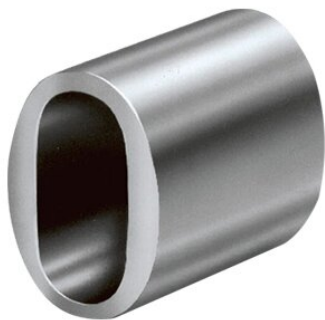


Ferrule ST Talurit®

Product information



TALURIT®

ST Ferrule is for splicing of steel wire rope and this type of ferrule is typically more resistant to mechanical wear

Typically carbon steel ferrules are used when corrosion, higher temperature and special dragging applications are used. This system is also an alternative to the flemish eye, this is due to the fact that you have all the benefits as above but the simplicity of a straight turnback system.

... [Read more](#)

Material: Carbon steel

Marking: According to standard

Standard: EN 13411-3

Note: See the manufacturer's product data sheet below for guidance on dimension selection. The turnback ferrule system is easy to use. It is quick, safe and has proved itself to be totally reliable. It is far more efficient than all other swaging methods on the m

Ferrule ST Talurit®

[Blueprint](#)[Technical data](#)

Part code	Ferrule size	Length mm
120101700150	17	64